

2001 64 123f

Messrs :  
Date : June 22, 1987  
Specification No.: SSE16020

- a) Hybrid voltage regulator module incorporated triple diffused planar transistor
- b) For SMPS of TV power supply
- c) Fixed output voltage
- d) Transfermolded plastic package

1. Voltage sensing
2. Base drive
3. Input
4. Ground
5. Vout adjust

Refer to Fig.1

4. The type number and lot number shall be legitimately marked by white color.

## 5. Maximum Ratings

| Description                              | Symbol    | Unit | Ratings              |
|--|-----------|------|----------------------|
| Maximum Peak Input Voltage               | $V_{IN}$  | V    | 850                  |
| Input Current                            | $I_{IN}$  | A    | 6 (pulse 12A)        |
| Maximum Power Dissipation                | $P_D$     | W    | 27 ( $T_c=100dC$ )   |
| Operating Temperature                    | $T_{op}$  | dC   | -20 ~ +125 ( $T_c$ ) |
| Storage Temperature                      | $T_{stg}$ | dC   | -30 ~ +125           |
| Junction Temperature of Power Transistor | $T_j$     | dC   | +150                 |

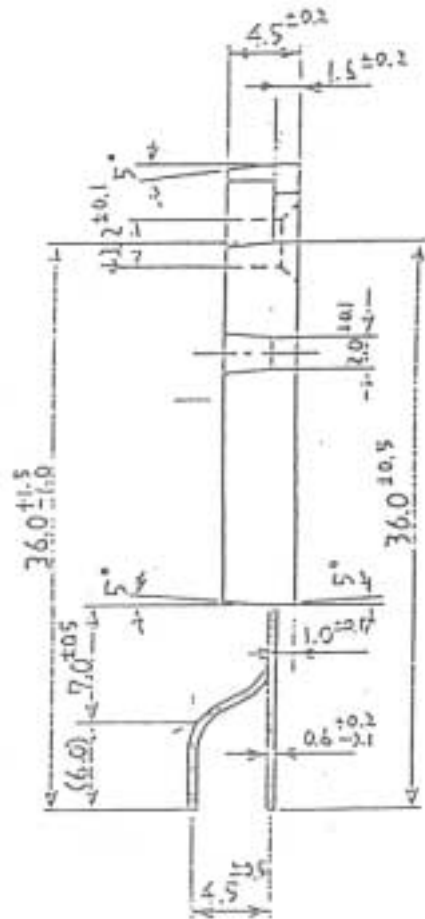
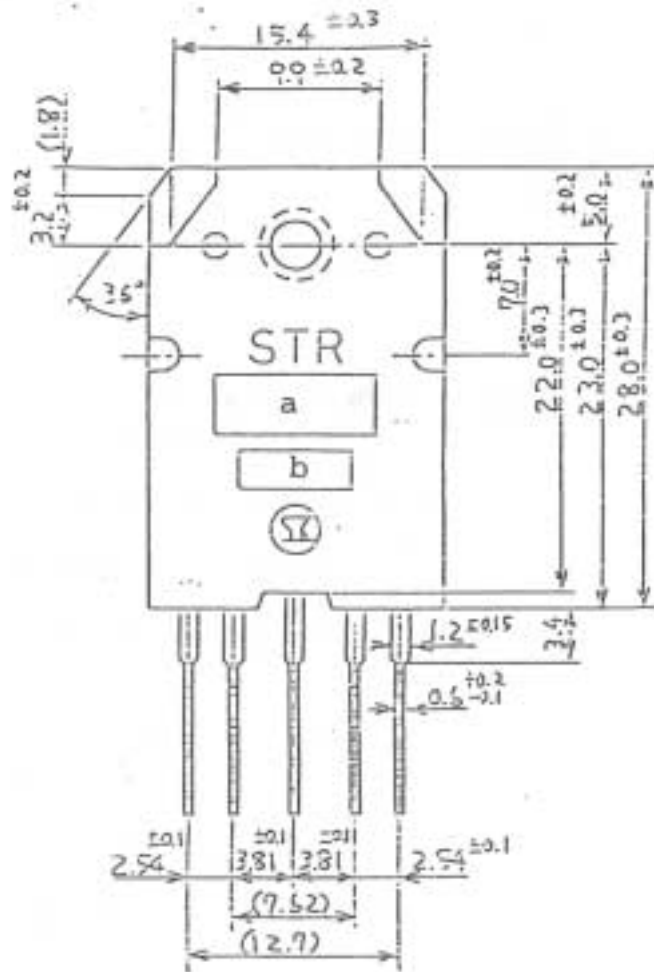
## 6. Electrical Characteristics

| Description                               | Symbol        | Test Conditions                                     | Ratings               |
|---|---------------|---|-----------------------|
| Sensing Voltage (Fixed Voltge)            | $V_O$         | $I_{IN}=7mA$ , Test Circuit No.1                    | $41.8^{+0.5}_{-0.5}V$ |
| Temperature Coefficient of output voltage |               | $T_c=-20 \sim +100dC$<br>$I_{IN}=7mA$ , Test C.No.1 | $^{+2.0}_{-2.0}mV/dC$ |
| Power Transistor                          | $V_{CE(sat)}$ | $I_C=2A$ , $I_B=0.4A$                               | 0.4V Max.             |
| ↓   | $h_{FE}$      | $V_{CE}=4V$ , $I_C=1A$                              | Min. 15<br>Max. 38    |
| ↑   | $I_{CEX}$     | $V_{CE}=850V$ , $V_{BE}=-1.5V$                      | 1.0mA Max.            |
| ↓   | $V_{BE(sat)}$ | $I_C=2A$ , $I_B=0.4A$                               | 1.5V Max              |
| Thermal Resistance                        | $R_{th(j-c)}$ | From junction to metal flange                       | 1.8dC/W               |
| Switching time                            |               | Test Circuit No.2                                   | $t_s$ 11.0μsecMax.    |
|   |               |   | $t_f$ 0.5μsecMax.     |

Remarks: Recommended case temperature is  $T_{op}(T_c)=100dC$ Max.

### Suggested Silicone Grease

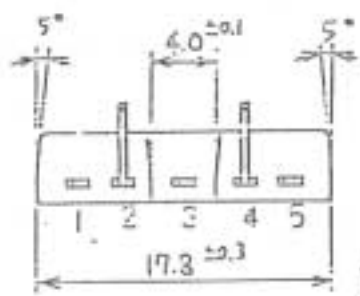
C746: SHIN-ETSU CHEMICAL INDUSTRY CO., LTD.  
 C747: SHIN-ETSU CHEMICAL INDUSTRY CO., LTD.  
 YG6260: TOSHIBA SILICONE CO., LTD.  
 SC102: TORAY SILICONE CO., LTD.




a. Type number 58041

b. Lot number

1st number for year  
 2nd number for month  
 1-9: Jan.-Sept.  
 O : Oct.  
 N : Nov.  
 D : Dec.  
 3rd & 4th number for date



1. Voltage sensing
2. Base drive
3. Input
4. Ground
5. Vout adjust

|            |       |       |       |   |   |   |
|------------|-------|-------|-------|---|---|---|
| △          | 4 版   | ・     | ・     | 製造  | 承認  | Outline Drawings<br>of 2GR Plastic<br>Molded Package<br>LF No.501 |
| △          | 3 版   | ・     | ・     |  |  |   |
| △          | 2 版   | ・     | ・     |   |   |   |
| △          | 1 版   | ・     | ・     |   |   |   |
| 関連<br>図番   |       |       |       | 製造  | 設計  | 4B-E 01244 7/7  |
| サンケン電気株式会社 |       |       |       | 全線 85・11・24   |  |   |
|            |       |       |       | 尺法 2/1  |   |   |
| 分装コード      | ..... | ..... | ..... | .....   | .....   | S S E 16020   |