

## SPECIFICATION

Rating : 50mA 12V DC.

Insulation resistance : >100MQ 250V DC.

Withstand voltage : 250V AC for 1 minute.

Contact resistance : <100mΩ.

Life : 100,000 Cycles.

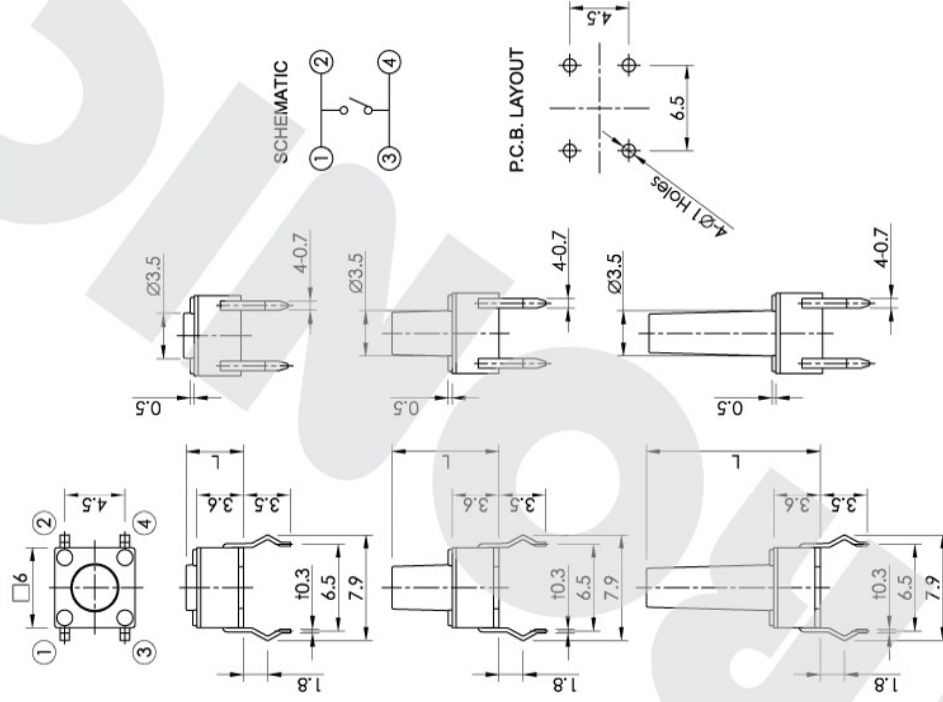
Ambient temperature : -25°C ~ +70°C.

Operating force : 130, 160, 250±50g.

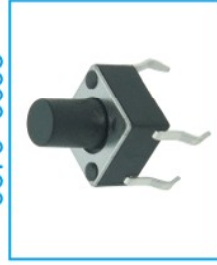
0643~0660



MODEL NO.	L
0643	4.3
0650	5.0
0660	6.0



0670~0695



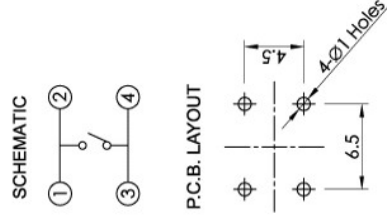
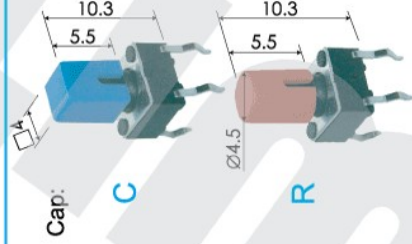
MODEL NO.	L
0670	7.0
0680	8.0
0690	9.0
0695	9.5

0611~0621



MODEL NO.	L
0610	10.0
0611	11.0
0612	12.0
06125	12.5
0613	13.0
06135	13.5
0614	14.0
0615	15.0
0616	16.0
0617	17.0
0619	19.0
0621	21.0

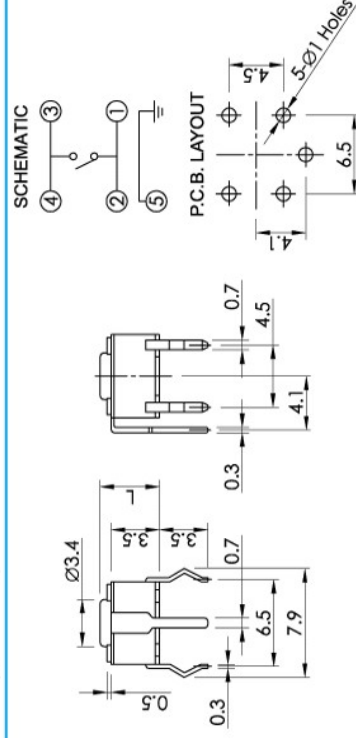
0673



0643G  
0650G (Grounding)



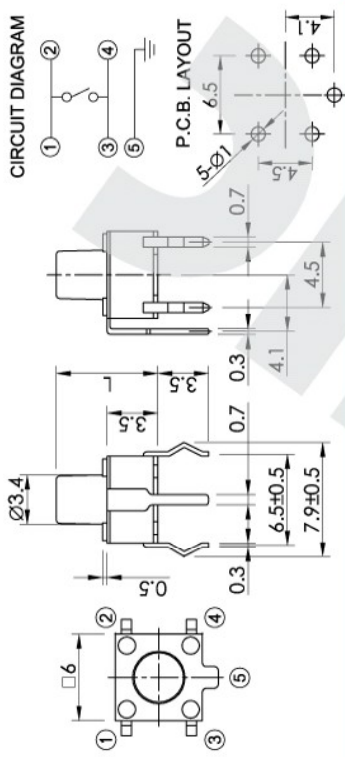
MODEL NO.	L
0643G	4.3
0650G	5.0



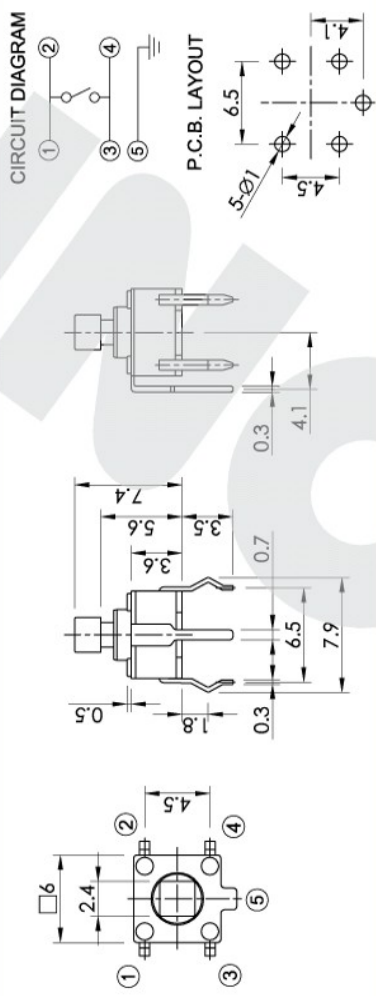
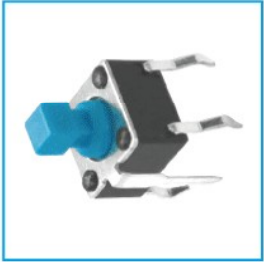
0670G,0680G,0695G, (Grounding)  
06125G,06135G



MODEL NO.	STEM(L)
0670G	7.0
0680G	8.0
0695G	9.5
06125G	12.5
06135G	13.5



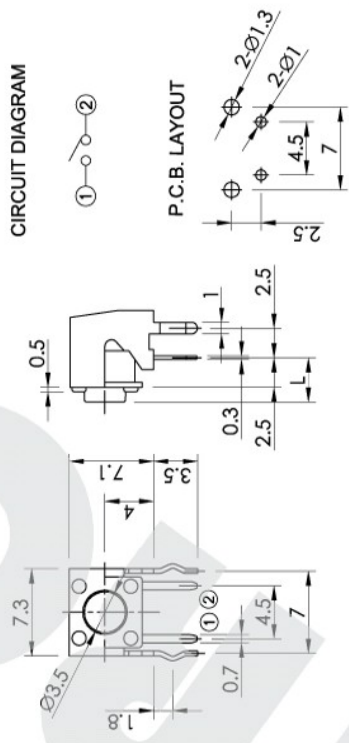
0673G (Grounding)



0743, 0750



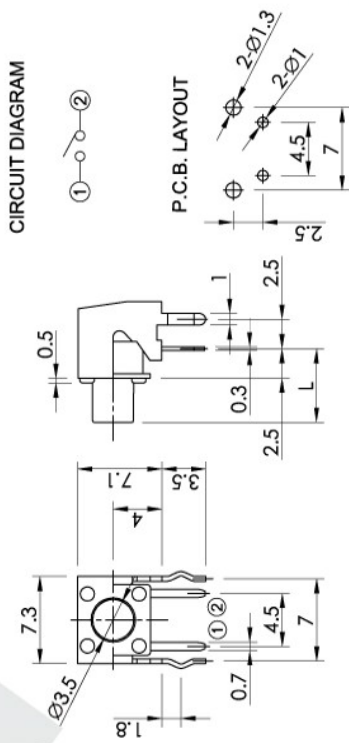
MODEL NO.	STEM(L)
0743	3.15
0750	3.85
0755	4.35
0760	4.85



0770, 0780, 0795



MODEL NO.	STEM(L)
0770	5.85
0772	6.15
0780	6.85
0795	8.35
07125	11.35
07135	12.35



0773

